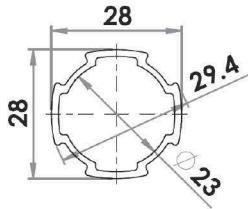
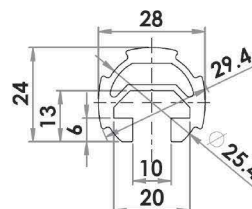


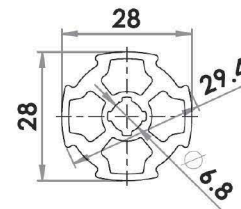
ALUMINUM PIPE FRAME



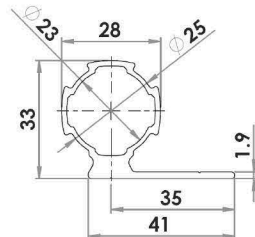
Material: A6063-T5 / Clear Anodize
Mass: 0.37 kg./m.
4-6 M. MAX. LENGTH



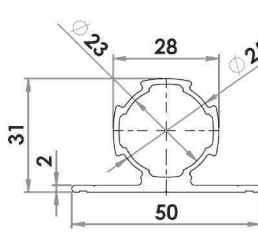
Material: A6063-T5 / Clear Anodize
Mass: 0.68 kg./m.
6 MAX. LENGTH



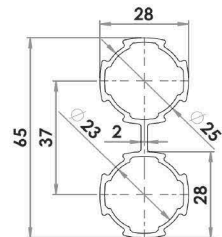
Material: A6063-T5 / Clear Anodize
Mass: 0.79 kg./m.
4 MAX. LENGTH



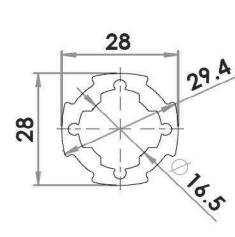
Material: A6063-T5 / Clear Anodize
Mass: 0.67 kg./m.
4 M. MAX. LENGTH



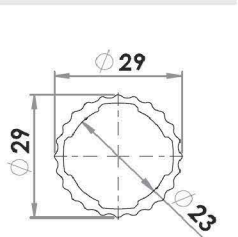
Material: A6063-T5 / Clear Anodize
Mass: 0.65 kg./m.
4 M. MAX. LENGTH



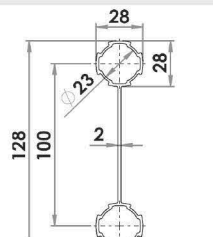
Material: A6063-T5 / Clear Anodize
Mass: 0.79 kg./m.
4 M. MAX. LENGTH



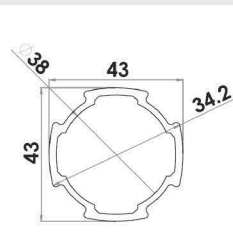
Material: A6063-T5 / Clear Anodize
Mass: 0.79 kg./m.
4 M. MAX. LENGTH



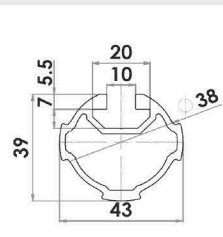
Material: A6063-T5 / Clear Anodize
Mass: 0.46 kg./m.
4 M. MAX. LENGTH



Material: A6063-T5 / Clear Anodize
Mass: 1.13 kg./m.
4 M. MAX. LENGTH



Material: A6063-T5 / Clear Anodize
Mass: 0.74 kg./m.
4 M. MAX. LENGTH

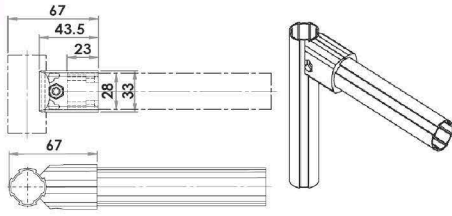


Material: A6063-T5 / Clear Anodize
Mass: 0.98 kg./m.
4 M. MAX. LENGTH

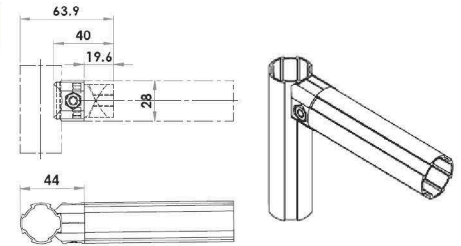
ACCESSORIES / ALUMINUM PIPE FRAME



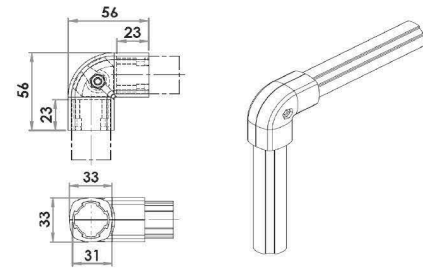
PFJ28-A01
Mat'l: Aluminum Diecast
Weight : 61 g



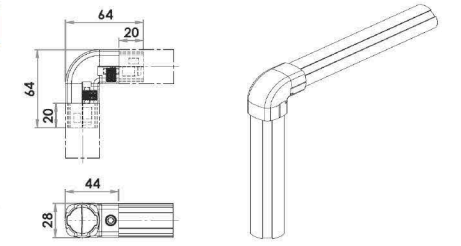
PFJ28-B01
Mat'l: Aluminum Diecast
Weight : 183 g



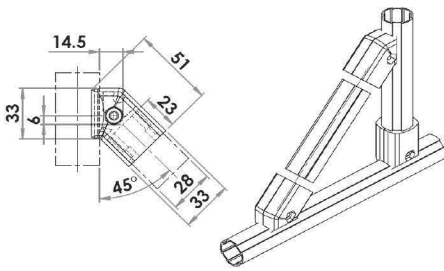
PFJ28-A90
Mat'l: Aluminum Diecast
Weight : 127 g



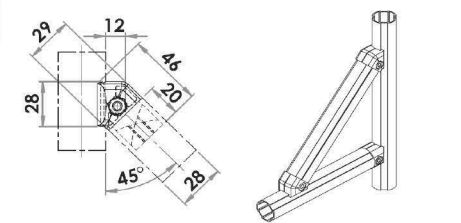
PFJ28-B90
Mat'l: Aluminum Diecast
Weight : 96 g



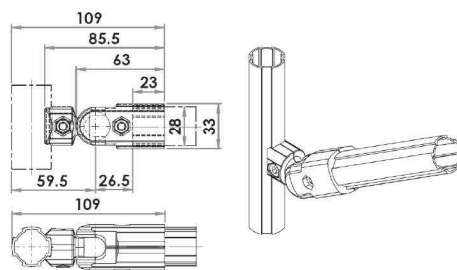
PFJ28-A45
Mat'l: Aluminum Diecast
Weight : 37.8 g



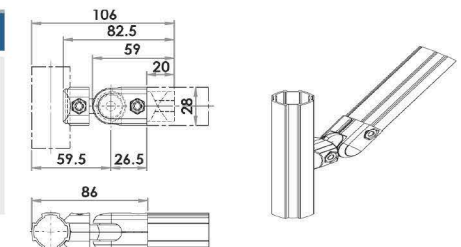
PFJ28-B45
Mat'l: Aluminum Diecast
Weight : 96 g



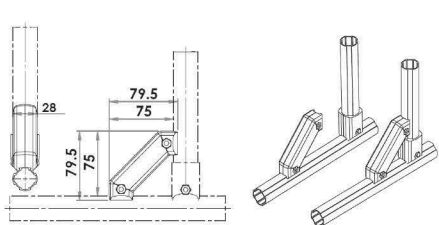
PFJ28-AF
Mat'l: Aluminum Diecast
Weight : 38 g



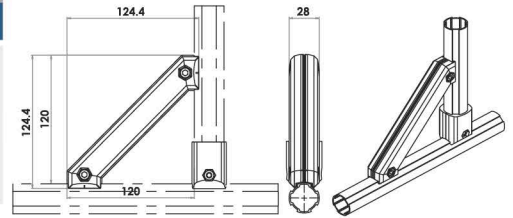
PFJ28-BF
Mat'l: Aluminum Diecast
Weight : 183 g



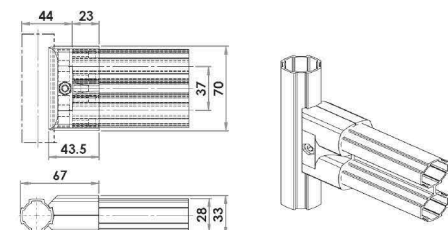
PFJ28-AP45
Mat'l: Aluminum Diecast
Weight : 127 g



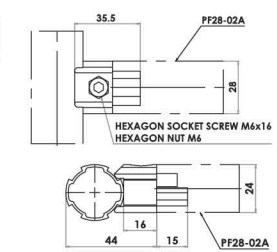
PFJ28-B80
Mat'l: Aluminum Diecast
Weight : 167 g



PFJ28-A06
Mat'l: Aluminum Diecast
Weight : 127 g



PFJ28-A255
Mat'l: Aluminum Diecast
Weight : 46 g

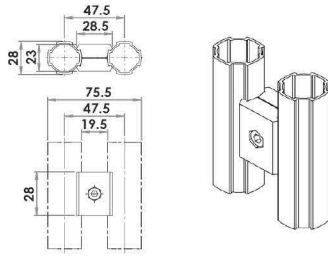


ACCESSORIES / ALUMINUM PIPE FRAME

PFJ28-A03



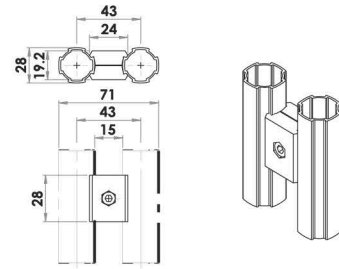
Mat'l: Aluminum Diecast
Weight : 38 g



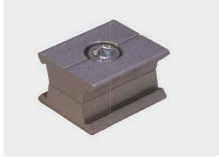
PFJ28-AA95



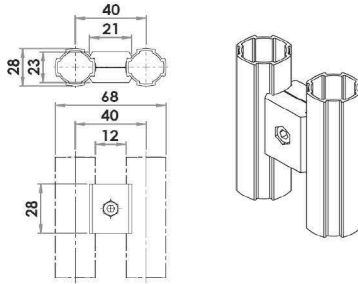
Mat'l: Aluminum Diecast
Weight : 28.5 g



PFJ28-A09



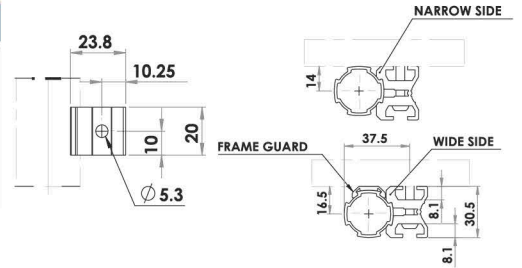
Mat'l: Aluminum Diecast
Weight : 24.8 g



PFE28-05



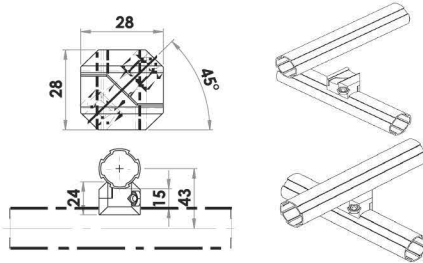
Mat'l: Aluminum Diecast
Weight : 17.4 g



PFJ28-A04



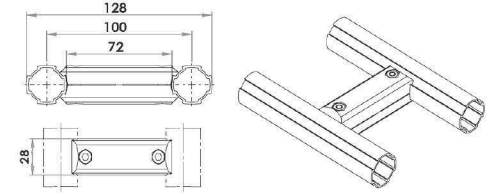
Mat'l: Aluminum Diecast
Weight : 37.8 g



PFJ28-A08



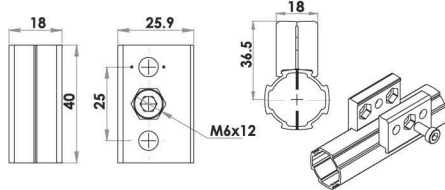
Mat'l: Aluminum Diecast
Weight : 26.2 g



PFJ28-A31



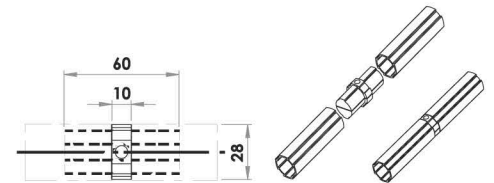
Mat'l: Aluminum Diecast
Weight : 53 g



PFJ28-B02



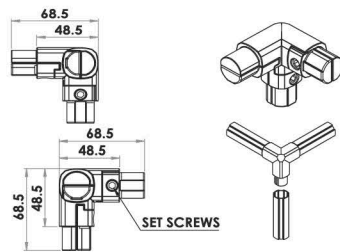
Mat'l: Aluminum Diecast
Weight : 113 g



PFJ28-AL10



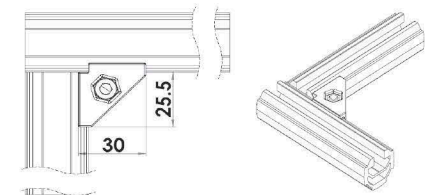
Mat'l: Aluminum Diecast
Weight : 217 g



PFJ28-A13



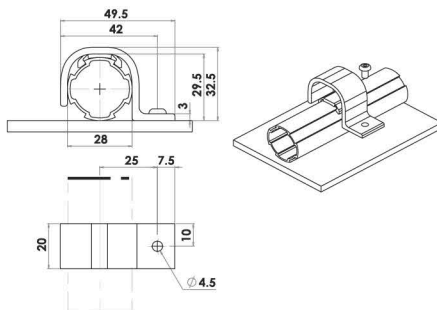
Mat'l: Aluminum Diecast
Weight : 96 g



PFJ28-A25



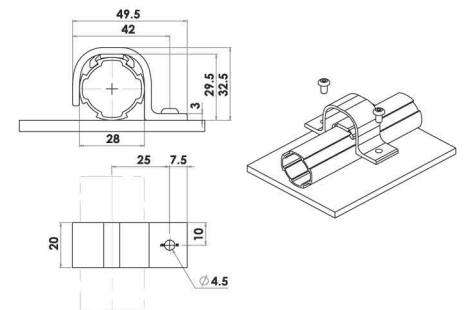
Mat'l: Aluminum Extrude
Weight : 15 g



PFJ28-427



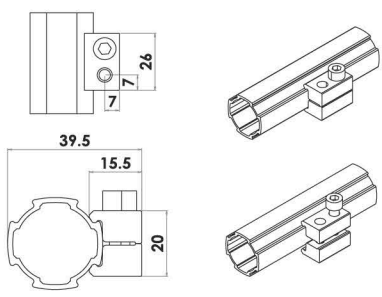
Mat'l: Aluminum Extrude
Weight : 14 g



ACCESSORIES / ALUMINUM PIPE FRAME

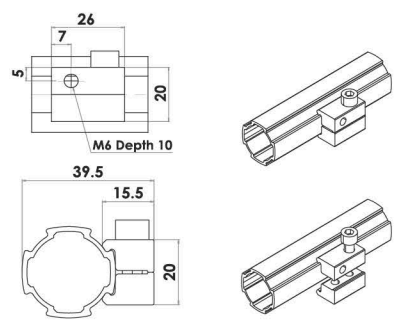
PFJ28-A10

Mat'l: Aluminum Diecast
Weight : 20.5 g



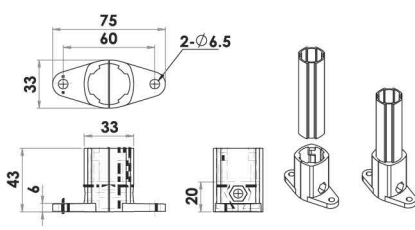
PFJ28-A11

Mat'l: Aluminum Diecast
Weight : 20.7 g



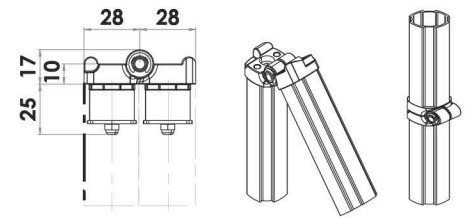
PFJ28-A07

Mat'l: Aluminum Diecast
Weight : 183 g



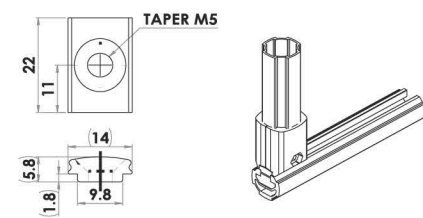
PFE28-07

Mat'l: Aluminum Diecast
Weight : 87 g



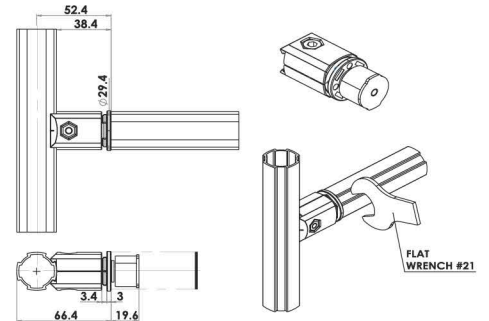
PFE28-AL13

Mat'l: Aluminum Extrusion
Weight : 20 g



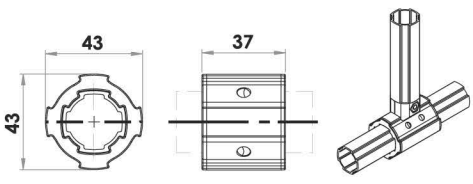
PFJ28-B58

Mat'l: Aluminum Diecast
Weight : 99 g



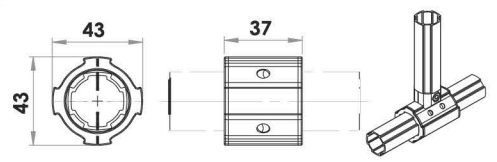
PFE28-4328D-37

Mat'l: Body Part : Aluminum Extrusion
Slide Bush : Conductive polypropylene
Weight : 31 g



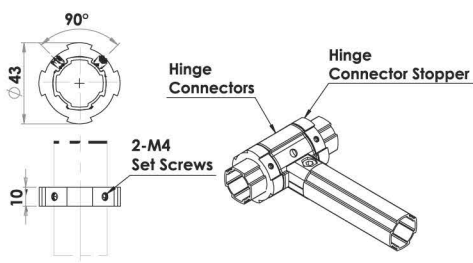
PFE28-4328Z-37

Mat'l: Mat'l: Body Part : Aluminum Extrusion
Slide Bush : Nylon 6
Weight : 34.6 g



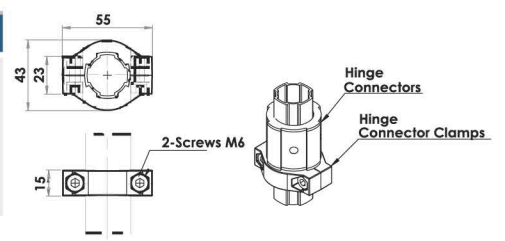
PFE28-03

Mat'l: Aluminum Diecast
Weight : 21 g



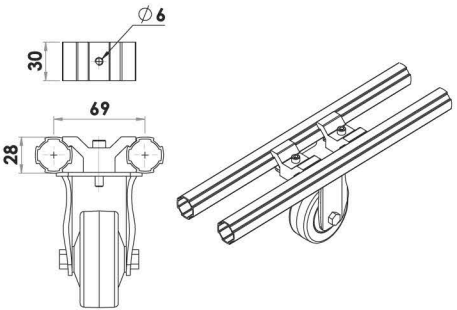
PFE28-04

Mat'l: Aluminum Diecast
Weight : 33 g



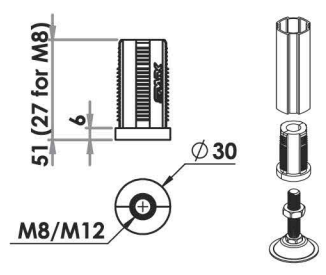
PFE28-C10

Mat'l: Aluminum Diecast
Weight : 64 g



PFP28-28M8/M12

Mat'l: Polyamide
Weight : 23.2 g

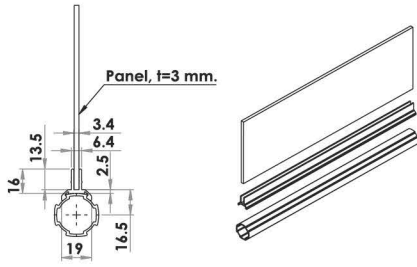


ACCESSORIES / ALUMINUM PIPE FRAME

PFP28-G3MM



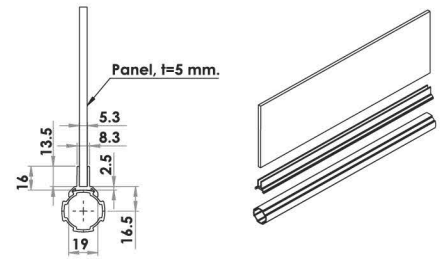
Mat'l: Polypropylene
Weight : 81 g



PFP28-G5MM



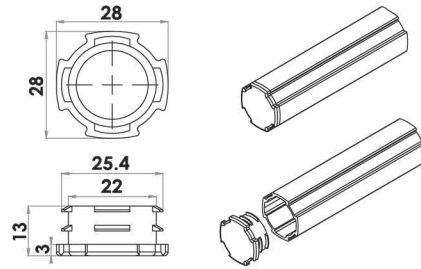
Mat'l: Polypropylene
Weight : 83.5 g



PFP28-01



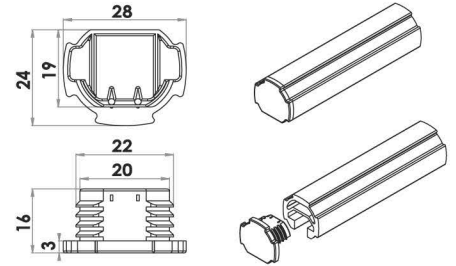
Mat'l: Nylon
Weight : 3.4 g



PFP28-12



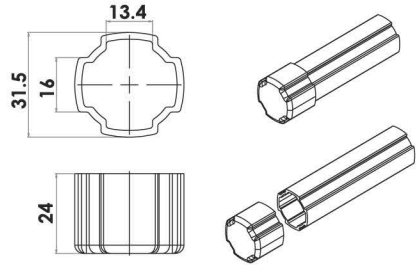
Mat'l: Nylon
Weight : 1.6 g



PFP28-19



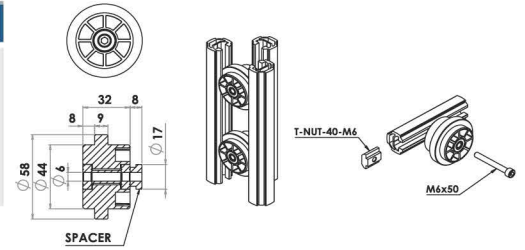
Mat'l: Polyethylene
Weight : 37.8 g



PFE28-16



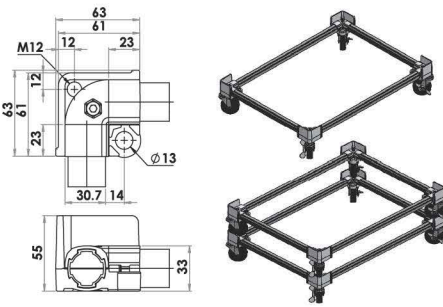
Mat'l: Nylon 6
Weight : 59 g



PFP28-AL1205A



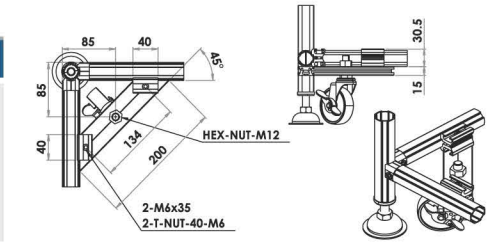
Mat'l: Aluminum Diecast
Weight : 193 g



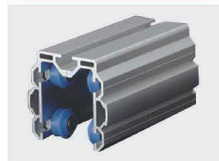
PFP28-AL1205C



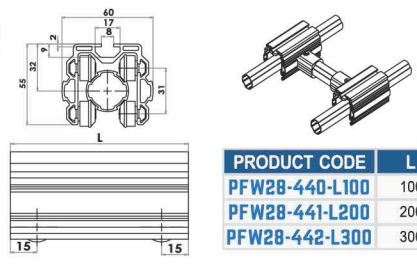
Mat'l: Aluminum Extrude
Weight : 269 g



PFW28



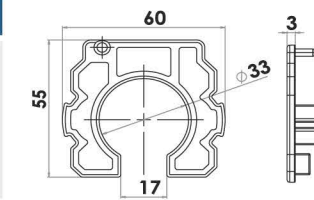
Mat'l: Aluminum Extrusion
Weight : 217 g



PFW28-468



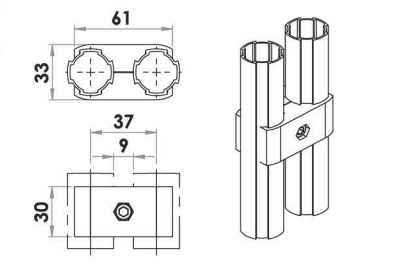
Mat'l: Resin
Weight : 8 g



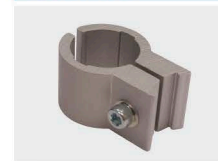
PFJ28-A05



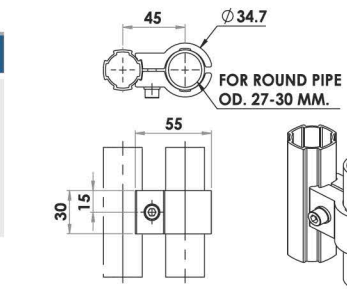
Mat'l: Aluminum Extrusion
Weight : 64.3 g



PFJ28-CC1



Mat'l: Aluminum Extrusion
Weight : 67.8 g

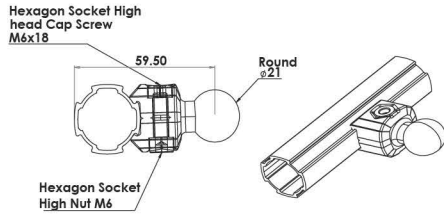


ACCESSORIES / ALUMINUM PIPE FRAME

PFJ28-A12



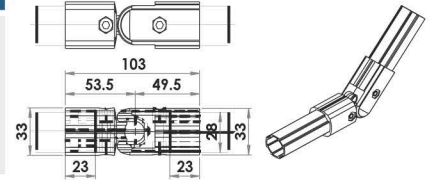
Mat'l: Aluminum Diecast
Weight : 47.8 g



PFJ28-CF



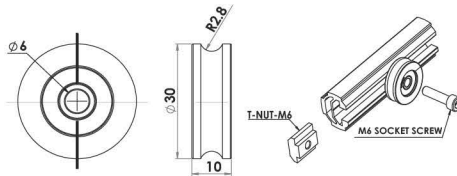
Mat'l: Aluminum Diecast
Weight : 110 g



PFE28-17



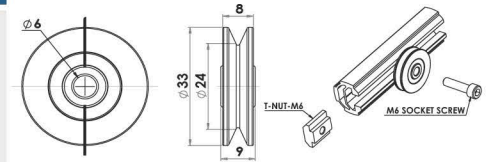
Mat'l: Steel
Weight : 50 g



PFE28-18



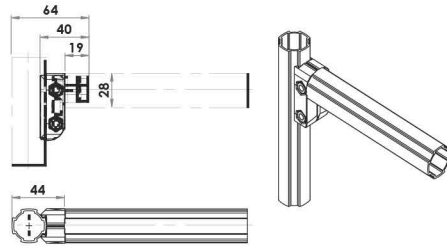
Mat'l: Steel
Weight : 93.3 g



PFJ28-AL11K



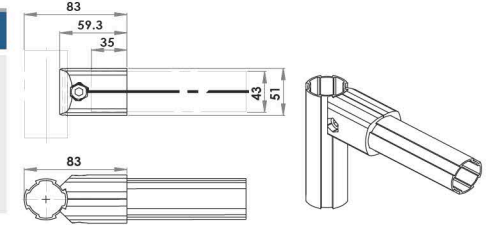
Mat'l: Aluminum Diecast
Weight : 82 g



PFJ43-A01



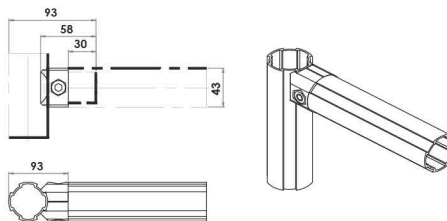
Mat'l: Aluminum Diecast
Weight : 195 g



PFJ43-B01



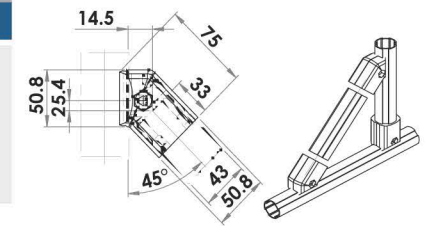
Mat'l: Aluminum Diecast
Weight : 148 g



PFJ43-A45



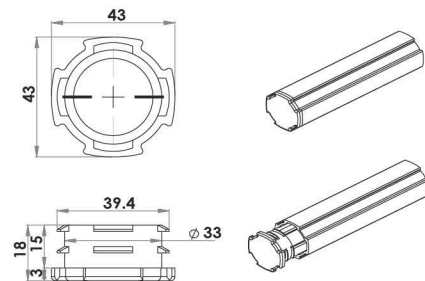
Mat'l: Aluminum Diecast
Weight : 221 g



PFJ43-01



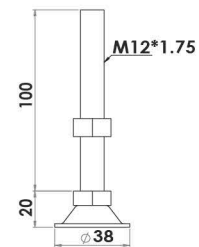
Mat'l: Nylon
Weight : 3.4 g



PN28-000



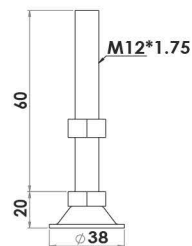
Mat'l: SS400 With Bright Chromate



PN28-002



Mat'l: SS400 With Bright Chromate



PN28-003S



Mat'l: Stainless

